



# MEDCOUTURE

SUMMER 2025





Clear skies,  
bold vibes.

# AMP COLLECTION



Model: Shown in MC703 in the new core color, White (WHT)

WHITE (WHT)

## Pieces *with* Personality

Get ready to amp up your style with the latest line that's set to steal the spotlight. Bold, vibrant, and effortlessly cool, the all-new AMP collection delivers a high-voltage jolt to your everyday wardrobe. Made with naturally soft fabrics, these sporty-chic performance pieces feature modern design perks, giving scrubs a sophisticated edge. New must-haves to electrify your look, pairing seamlessly with core and fresh fashion-forward colors, for a revved-up rotation that's as radiant as you are.





**STYLE MC703**  
**DOLEMAN TOP**

Show off your style with this ultra-cute, tuckable top. The trendy dolman sleeves give it a fresh, modern vibe, while the two zipper pockets and bungee ID badge loop at the neckline add the perfect mix of function and flair.

- Rib-knit trim neckline, armholes, back yoke
- 2 pockets: 1 zipper shoulder, 1 zipper side seam
- Dolman sleeves
- Rounded hem

**CORE SIZING:** XS-2XL | 25\*\*  
**FASHION SIZING:** XS-2XL | 25\*\*

**STYLE MC102**  
**AMP JOGGER**

These comfy joggers are crafted with soft, stretchy, and moisture-wicking fabric, making them overnight shift-approved. With five pockets, a utility D-ring, and a dedicated slot for your pen or medical instrument, this pant keeps everything you need within reach.

- Rib-knit elastic waistband with drawstring
- 5 pockets: 2 front with pen slot, 1 zipper cargo, 2 back
- Rib-knit cuffs
- Tapered jogger leg, 8.625" opening

**CORE SIZING:** REGULAR: XXS-3XL | 29"  
PETITE: XXS-2XL | 26.5\*\*  
**FASHION SIZING:** REGULAR: XS-2XL | 29"  
PETITE: XS-XL | 26.5\*\*

*\* For a full overview of the available sizes and colors, please refer to the product guide.*



**STYLE MC500**  
**4-POCKET ZIP FRONT VEST**

Meet your new vest friend. This sporty-chic essential is equal parts stylish and versatile, with a snap-off hood, stretchy back and side panels, and a sleeveless design that loves to be layered.

- Zip front vest
- Center front zipper closure
- Snap off hood
- 4 front pockets
- Rib-knit back yoke, side panels and hem
- Locker loop

**CORE SIZING:** XS-2XL | 25\*\*  
**FASHION SIZING:** XS-2XL | 25\*\*

*\* For a full overview of the available sizes and colors, please refer to the product guide.*



MODEL LEFT | STYLE MC103  
STRAIGHT LEG PULL ON PANT

Less fuss, more fashion. That's the feeling of this pull-on pant that makes suiting up a cinch. A clean, classic fit and four-way stretch makes this pair a must-have piece in your professional medical lineup.

- 4 Pockets: 2 front, 1 zipper cargo, 1 back patch
- High-rise elastic back waistband
- Internal drawstring
- Side vents
- Straight leg, 15" opening

**CORE SIZING:** REGULAR: XXS-3XL | 31"  
PETITE: XXS-2XL | 28.5", TALL: XS-XL | 34"  
**FASHION SIZING:** REGULAR: XS-3XL | 31"  
PETITE: XS-2XL | 28.5"

MODEL RIGHT | STYLE MC704  
3-POCKET SQUARE NECK TOP

A square-neck scrub you'll surely circle back to. This trendy yet timeless top offers maximum comfort and sporty, flexible stretch, with a breathable cotton blend that makes performance the priority.

- Rib-knit neck band
- Raglan sleeves
- 3 Pockets: 2 front patch, 1 cell phone patch
- Locker loop at center back
- Side vents

**CORE SIZING:** XS-2XL | 24"  
**FASHION SIZING:** XS-2XL | 24"

MODEL RIGHT | STYLE MC104  
HIGH RISE 4-POCKET FLARE PANT

High-rise style with just enough flare. This trendy pant looks especially chic with tucked-in or slightly cropped scrub tops. Super-stretch fabric means flexible comfort, with handy cargo pockets and a sleek silhouette.

- High-rise, convertible elastic waistband can be folded down to reveal internal logo
- Convertible drawstring
- 4 Pockets: 2 drop at waist, 2 patch cargo
- Locker loop
- Flare leg, 21" opening

**CORE SIZING:** REGULAR: XS-2XL | 31"  
PETITE: XS-XL | 29", TALL: XS-XL | 34"  
**FASHION SIZING:** REGULAR: XS-2XL | 31"  
PETITE: XS-XL | 29"

*\* For a full overview of the available sizes and colors, please refer to the product guide.*

**Model Left:** Shown in MC702 (next page) and MC103 in the core color, Pewter (PWTR)  
**Model Center:** Shown in MC703 and MC102 in new fashion color, Teal Tonic (TLTC)  
**Model Right:** Shown MC704 and MC104 in new fashion color, Teal Tonic (TLTC)





Model: Shown in MC704 and MC104 in Pink Power (PKNO)

STYLE MC303  
CROPPED  
WARM UP JACKET

Meet your coolest warm-up coat yet. This stretchy, stylish scrub jacket is ideal for chilly shifts, or as a trendy final touch. Pair with our matching flare-leg pant for a comfy, coordinated look that always feels amazing.

- Front princess seams
- 2 Inseam pockets
- Instrument loops
- Rib-knit waistband and cuffs

CORE SIZING: XS-3XL | 22.5\*\*  
FASHION SIZING: XS-2XL | 22.5\*\*

\* For a full overview of the available sizes and colors, please refer to the product guide.



Model: Shown in MC702 and MC103

STYLE MC702  
SHAPED V-NECK TOP

Simple, but never basic. Discover effortless styling with our v-neck top made with princess seams for a flattering fit. We've added plenty of storage with a twill tape instrument loop, three roomy pockets, and even a spot for your favorite pen.

- Shaped neckline
- 3 pockets: 2 patch, 1 cellphone with pen slot
- Instrument loops
- Rib-knit side panels with vents

CORE SIZING: XXS-3XL | 25.5\*\*  
FASHION SIZING: XS-3XL | 25.5\*\*

\* For a full overview of the available sizes and colors, please refer to the product guide.





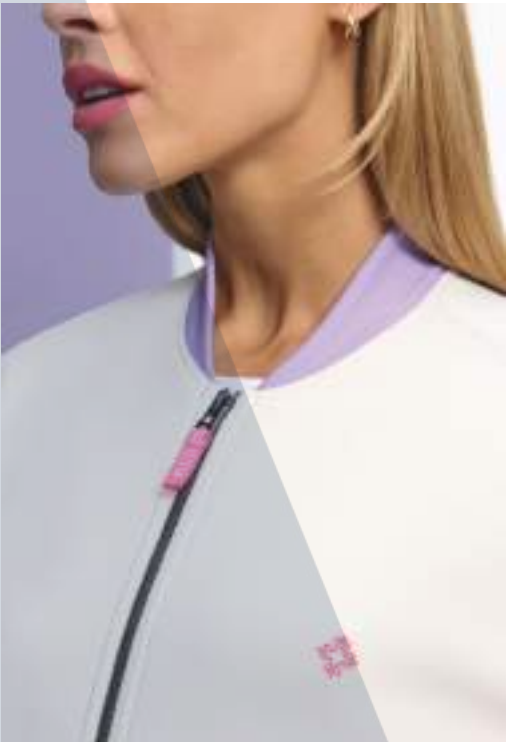
**STYLE MC304**  
**2-POCKET**  
**BOMBER JACKET**

The one jacket every work wardrobe needs. This comfy-casual bomber is a must for stylish healthcare pros, a smart staple that is trendy yet practical. Color pop accents and ribbed cuffs add a sporty touch.

- Rib-knit collar and sleeve cuffs
- 2 front welt pockets
- Locker loop
- Logo elastic hem

**SIZING:** XS-2XL | 23"

*\* For a full overview of the available sizes and colors, please refer to the product guide.*



# TOUCH COLLECTION



Model Left: Shown in MC7459 and MC7739  
Model Right: Shown in MC7448 and MC7710

## A Touch *of* Comfort

Get ready for fabulous fits that flatter everyone, making comfort and style the ultimate power couple. Touch is redefining comfort with a luxe Rayon-Spandex blend that feels just like cotton, but with a modern twist. Designed for all body types, our extended sizes ensure everyone can look and feel amazing.

MALI-BLUE  
SHORE (MBSR)





MODEL LEFT | STYLE MC7448  
KNIT TUCK-IN V-NECK TOP

The little things mean everything. So, we sweat the small stuff—like the stretchy rib-knit shoulders, the handy bungee loop, and the simple yoke detail—so you don't have to. Tucked or untucked, this one always works.

- 1 Pocket
- Rib-knit shoulder yokes
- ID badge loop
- Side vents

CORE SIZING: XS-3XL | 27.5"  
FASHION SIZING: XS-3XL | 27.5"

MODEL LEFT | STYLE MC7710  
JOGGER YOGA PANT

Your go-to, go-anywhere pants. Enjoy this comfortable, practical mashup inspired by athleisure wear. The Touch Performance fabric feels soft like cotton.

- 5 Pockets: 2 angled front, 1 cargo, 2 back patch
- Accessory loop
- Mid-rise rib-knit waistband and cuffs
- Adjustable drawstring
- Jogger, 8.75" opening

CORE SIZING: REGULAR: XS-3XL | 28.5"  
PETITE: XS-XL | 26.5", TALL: XS-XL | 31"  
FASHION SIZING: REGULAR: XS-3XL | 28.5"

\* For a full overview of the available sizes and colors, please refer to the product guide.

Model Left: Shown in MC7448 and MC7710  
Model Right: Shown in MC7459 and MC7739







**MODEL LEFT | STYLE MC7459**  
**V-NECK SHIRTTAIL TOP**

Go long in this fan favorite. The knit side panels deliver flattering flexibility, and the elongated tail is all about going untucked.

- 4 Pockets: 2 front, 1 zipper accessory, 1 pen slot
- Rib-knit side panels

**CORE SIZING:** REGULAR: XS-5XL | 27\*\*  
**FASHION SIZING:** REGULAR: XS-3XL | 27\*\*

**MODEL LEFT | STYLE MC7739**  
**YOGA STRAIGHT LEG CARGO PANT**

Get the light, relaxed feel of cotton with the performance and flexibility of your favorite workout pants. Perfect for picking up a long shift—or taking on a super-long to-do list—and making it look easy.

- 7 Pockets: 2 front, 2 cargo, 1 accessory, 2 back
- Mid-rise rib-knit waistband Internal drawstring
- Side vents
- Straight leg, 16" opening

**CORE SIZING:** REGULAR: XS-5XL | 31"  
PETITE: XS-2XL | 29", TALL: XS-XL | 33.5\*\*  
**FASHION SIZING:** REGULAR: XS-3XL | 31\*\*

*\* For a full overview of the available sizes and colors, please refer to the product guide.*

**MODEL MIDDLE | STYLE MC7478**  
**MEN'S TOUCH CADENCE 1 POCKET TOP**

The Cadence scrub top combines superior fit, performance, and comfort. This premium, tailored scrub top ensures men stay looking sharp all day long.

- Tuck-in design
- 1 Chest welt pocket
- Side vents

**CORE SIZING:** REGULAR: XS-3XL | 30\*\*

**MODEL MIDDLE | STYLE MC7779**  
**MEN'S TOUCH HUTTON STRAIGHT LEG PANT**

With plenty of storage and unbeatable comfort, Hutton pants are built for any task—whether you're on the job, relaxing on game day, or opting for a business casual look.

- Mid-rise elastic waistband
- Functional zip fly
- Adjustable drawstring
- 6 Pockets: 2 front, 2 cargo, 1 phone, 1 back
- Straight leg, 15" opening

**CORE SIZING:** REGULAR: XS-3XL | 31"  
SHORT: XS-3XL | 28.5", TALL: XS-3XL | 33\*\*

*\* For a full overview of the available sizes and colors, please refer to the product guide.*



INSIGHT COLLECTION

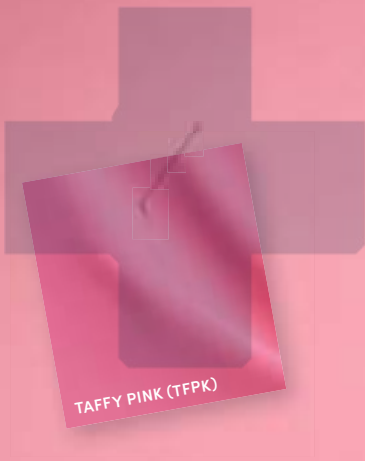


Model: Shown in MC510



## Better Together

For the fashion-forward professional, Insight is the ideal choice, whether you're outfitting a team, selecting staff scrubs, or elevating your own healthcare look. Featuring mechanical stretch fabric and jersey knit accents, this collection blends effortless comfort with modern silhouettes. This season, a rich berry hue takes center stage, alongside a new flutter sleeve top and scrunch-waist pant, adding a burst of energy to any wardrobe.



MODEL LEFT | STYLE MC2432  
TUCK-IN V-NECK TOP

Stand out in this stylish one-pocket top. With a bungee loop for your badges and split sleeve for style, you can tuck it in for that polished look.

- Slight forward shoulder
- Split sleeve detail
- Single pocket on the left chest

CORE SIZING: XS-5XL | 27\*\*  
FASHION SIZING: XS-3XL | 27"

MODEL LEFT | STYLE MC2711  
JERSEY KNIT JOGGER

Get a leg up. These athletic-inspired Insight joggers are made with a soft jersey-knit waistband and ankle cuffs that hold firm without binding. Plus, the double cargo pockets and breathable wicking fabric take them over the top.

- Jersey knit waistband and cuffs
- Adjustable drawstring
- 6 Pockets: 2 angled front, 2 cargo, 2 back
- Jogger, 8.75" opening

CORE SIZING: REGULAR: XS-3XL | 28.5"  
PETITE: XS-XL | 26.5", TALL: XS-XL | 31\*\*  
FASHION SIZING: REGULAR: XS-3XL | 28.5"  
PETITE: XS-XL | 26.5\*\*

MODEL CENTER | STYLE MC510  
ZIP-FRONT V-NECK JUMPSUIT

Jump into the jumpsuit trend with a one-and-done dream piece. Impossibly stylish and just as comfortable, its easy-zip design makes suiting up a breeze, with cargo pockets and a stretch waist creating a polished utilitarian look.

- Shaped rib-knit neckline
- Rib-knit elastic waistband
- 4 pockets: 2 front, 2 cargo
- Rib-knit cuffs
- Flare leg, 18" opening

SIZING: XS-2XL | 28.5\*\*

\* For a full overview of the available sizes and colors, please refer to the product guide.



STYLE MC2411  
CURVED HEM V-NECK TOP

Good things come in threes. Case in point: the fabulous fit, features, and fabric of your Insight V-neck scrub top. Made with a box pleat, shoulder binding, and a back yoke for a perfectly polished drape.

- 3 Pockets: 2 front, 1 accessory
- Front shoulder yokes
- Back yoke
- Side vents

CORE SIZING: XXS-5XL | 27\*\*  
FASHION SIZING: XS-3XL | 27\*\*

STYLE MC010  
MID-RISE FLARE LEG PANT

A flared pant with plenty of flair. Slimming and stylish, this trendy pair slips on seamlessly, its four-pocket design offering easy-reach storage. For a complete look, try with our matching warm-up jacket.

- 4 Pockets: 2 front, 2 cargo
- Flat front, elastic back waistband
- Internal drawstring
- Side vents

CORE SIZING: REGULAR: XXS-3XL | 31"  
PETITE: XS-2XL | 28.5", TALL: XS-XL | 34\*\*

\* For a full overview of the available sizes and colors, please refer to the product guide.





**STYLE MC700**  
**UNDERSCRUB TEE**

Freezing hospital? We got you. Layer up with this super soft underscrub made with moisture-wicking fabric—the elastic side ruching features adjustable taping to lengthen or shorten the top for a tailored fit.

- No Pockets
- Round neckline
- Adjustable elastic ruching at side seams
- Rounded hem

**CORE SIZING:** XS-2XL | 24\*\*  
**FASHION SIZING:** PETITE: XS-2XL | 24\*\*

**STYLE MC011**  
**ROUCHED WIDE LEG PANT**

Go wide with a professional pant that's right on trend. A ruched design and looser leg bring swingy, sophisticated style to this fun-to-wear pair. Five pockets and a comfy stretch waist make for an easy-on essential.

- 5 Pockets: 2 front, 2 cargo, 1 back
- Knit waistband with elastic ruching details
- Internal elastic drawstring
- Wide leg, 22" opening

**CORE SIZING:** REGULAR: XS-3XL | 31", PETITE: XS-XL | 28.5\*\*  
**FASHION SIZING:** REGULAR: XS-3XL | 31", PETITE: XL-XL | 28.5\*\*

*\* For a full overview of the available sizes and colors, please refer to the product guide.*



**STYLE MC611**  
**FLUTTER SLEEVE V-NECK**

The ultra-feminine scrub that has us all aflutter. Dainty, delicate sleeves and a graceful silhouette set this polished top apart, with functional feelgood fabric and discreet drop-in pockets.

- Self piping at neckline
- Flutter sleeves
- 2 front pockets
- Rounded hem
- Side vents

**SIZING:** XS-3XL | 24\*\*

*\* For a full overview of the available sizes and colors, please refer to the product guide.*





**STYLE MC2478**  
**TUCK-IN V-NECK TOP**

Stand out in this modern one-pocket scrub top that you can tuck in. Office fashion ready in WFH comfort.

- Relaxed design
- 1 Chest pocket
- Side vents

**SIZING:** XS-5XL | 30\*\*

**STYLE MC2765**  
**ZIP-FLY CARGO JOGGER**

Get a leg up. These athletic-inspired Insight joggers are built with a comfortable waistband and ankle cuffs that hold firm without binding. The double cargo pockets and breathable wicking fabric take them over the top.

- 5 Pockets: 2 front, 2 cargo, 1 back
- Mid-rise elastic waistband
- Adjustable drawstring
- Knit cuffs
- Jogger, 9.5" opening

**CORE SIZING:** REGULAR: XS-5XL | 29.5", SHORT: XS-3XL | 27", TALL: XS-3XL | 31.5\*\*

\* For a full overview of the available sizes and colors, please refer to the product guide.



**Model Right:** Shown in MC2432





# LAYERS & PRINTS



Model: Shown in MC303 and MC700



## Layered *with* Fabulous

Four fun prints pump new life into go-to looks, with bold brights and postcard-worthy patterns in coordinating fashion colors. From cozy fleece to sweater knits, stylish outerwear adds a final touch to everyday ensembles. Plus, two underscrubs get fresh color add-ons, making these key foundation pieces even more wearable.



2025 SUMMER PRINTS

Prints  
*that Pop*

**MC632**  
**TWO TONE**  
**SKIN TOP (TTSN)**

Make a statement in this chic one-pocket top. Featuring a bold, fashion-forward print and a sleek tuck-in design, it's perfect for achieving a polished, refined look. The V-neck adds a touch of sophistication, while the single pocket on the left chest offers both style and practicality.

**MC8564**  
**SPORTY MARBLE**  
**(SPMB)**

Style and functionality combines into one sleek design. Featuring two patch pockets, this print top is perfect for keeping your gadgets close at hand while also showing off your personal style. The smooth back panel creates a flattering, streamlined silhouette, ensuring you look as good as you feel. Whether you're on the go or relaxing, this top has everything in the right place.



**MC8564** | SPORTY MARBLE (SPMB)  
**SIZE:** XS-3XL  
**FABRIC:** 96% POLYESTER, 4% SPANDEX



**MC8564** | BOW MANIA (BWMA)  
**SIZE:** XS-3XL  
**FABRIC:** 96% POLYESTER, 4% SPANDEX



**MC632** | TWO TONE SKIN (TTSN)  
**SIZE:** XS-3XL  
**FABRIC:** 96% POLYESTER, 4% SPANDEX



**MC632** | VACATION POSTCARD (VCPC)  
**SIZE:** XS-3XL  
**FABRIC:** 96% POLYESTER, 4% SPANDEX





# MEDCOUTURE

SUMMER 2025



BEST SELLER



MC702

SHAPED  
V-NECK TOP

3 POCKETS

- ID badge loop
- 1 Cell phone pocket
- Rib-knit side panels
- Side vents
- SIZE: XXS-3XL | 25.5"

Black  
BLK

Navy  
NAVY

Pewter  
PWTR

Royal  
ROYL

Wine  
WINH

Ciel  
CIEL

White  
WHT

Pink Power  
PKNO

Coral Fusion  
CRFU

FASHION COLORS

Teal Tonic  
TLIC

Digital Lavender  
DGLV

Beyond Green  
BIGN

N/A

N/A

FASHION SIZING

XS-3XL



# AMP

**FABRIC:**  
95% Polyester | 5% Spandex Dobby

**MISSY FIT**

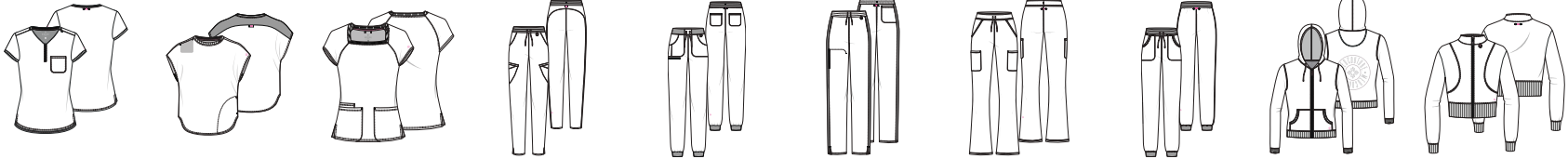
**COLLECTION FEATURES:**  
Four-Way Stretch | Moisture Wicking  
Easy Care

## WOMEN'S

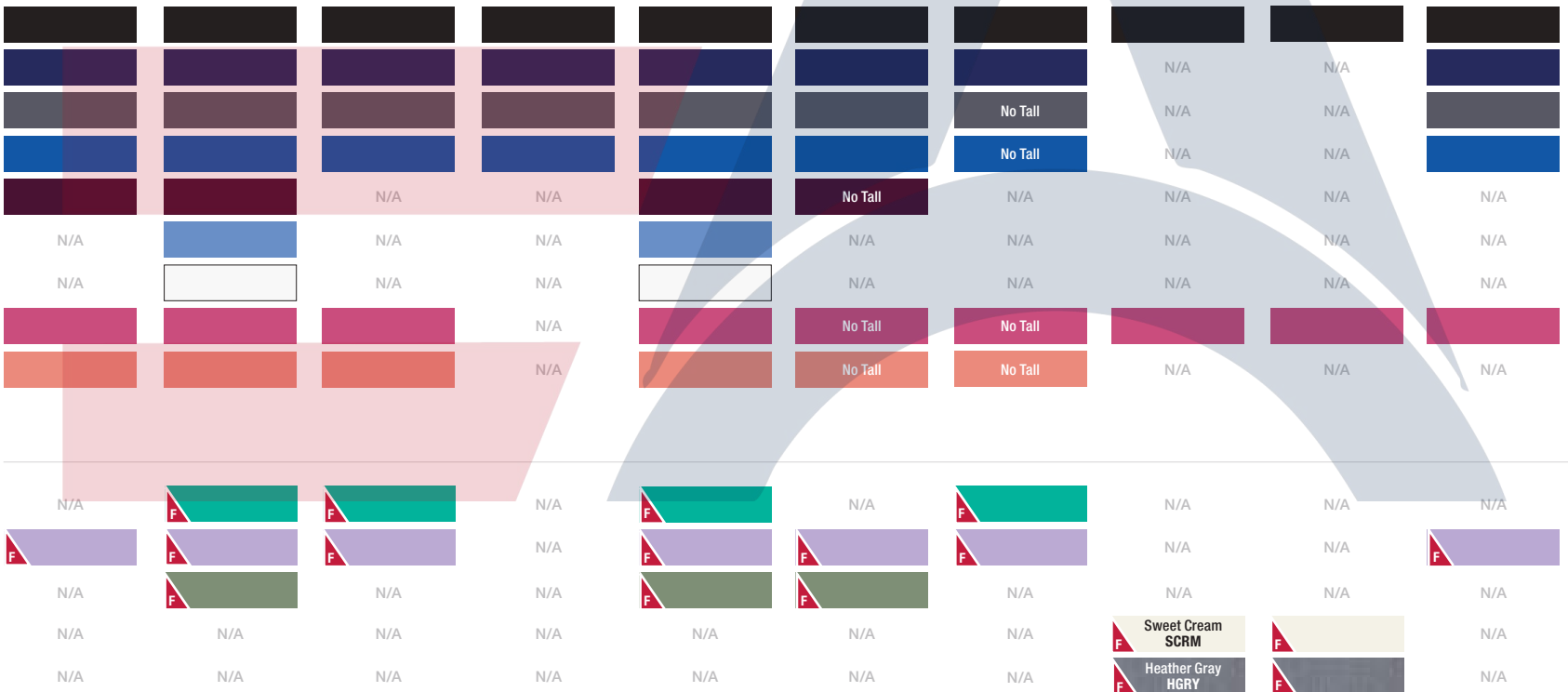
NEW

**BEST SELLER**

NEW



MC705	MC703	MC704	MC101	MC102	MC103	MC104	F MC106	F MC316	MC303
QUARTER-ZIP TUCK-IN V-NECK TOP	ROUND NECK TUCK IN TOP	SQUARE NECK TOP	TAPERED LEG CARGO PANT	MID-RISE JOGGER	STRAIGHT LEG PULL ON PANT	HIGH-RISE FLARE LEG PANT	FLEECE JOGGER	FLEECE EMBOSSED HOODIE	WARM-UP JACKET
1 POCKET	2 POCKETS	3 POCKETS	4 POCKETS	5 POCKETS	4 POCKETS	4 POCKETS	2 POCKETS	2 POCKETS	2 POCKETS
Cap sleeves	Dolman sleeves with rib-knit insets	Rib-knit neck band	Mid-rise rib-knit waistband with drawstring	Rib-knit waistband	High-rise elastic back waistband with internal drawstring	Convertible, fold down elastic waistband	Natural-rise rib-knit waistband with drawstring	Zip-front closure	Zip-front closure
ID badge loop		Raglan sleeves		Locker loop		Convertible drawstring		Rib-knit trim, cuffs and hem	Rib-knit cuffs and hem
Locker loop	2 Zipper pockets	1 Cell phone pocket	Leg opening, 13"	Rib-knit cuffs			Leg opening, 9.5"	Embossed logo on the back	Locker loop
High-low hem	ID badge loop			Leg opening, 8.5"	Leg opening, 15"	Leg opening, 21"			
SIZE:	SIZE:	SIZE:	SIZE:	SIZE:	SIZE:	SIZE:	SIZE:	SIZE:	SIZE:
XXS-3XL   25"	XS-2XL   25"	XS-2XL   24"	R: XS-3XL   29.5"	R: XXS-3XL   29"	R: XXS-3XL   31"	R: XS-2XL   31"	XS-2XL   28.5"	XS-2XL   24.5"	XS-3XL   22.5"



XS-2XL	XS-2XL	XS-2XL	XS-2XL	<b>R: XS-2XL</b> <b>P: XS-XL</b>	<b>R: XS-3XL</b> <b>P: XS-2XL</b>	R: XS-2XL P: XS-XL	XS-XL	XS-2XL	XS-2XL
--------	--------	--------	--------	-------------------------------------	--------------------------------------	-----------------------	-------	--------	--------

INSIGHT

FABRIC:  
100% Polyester  
MISSY FIT

COLLECTION FEATURES:  
Breathable | Super Soft  
Moisture Wicking

WOMEN'S

NEW			NEW		BEST SELLER		BEST SELLER		NEW		BEST SELLER		BEST SELLER	
MC302			MC500		MC304		MC2411		MC2468		MC609		MC2432	
CONVERTIBLE WINDBREAKER			CONVERTIBLE ZIP FRONT VEST		BOMBER JACKET		CURVED HEM V-NECK TOP		SIDE POCKET V-NECK TOP		PARTIAL ZIP HENLEY TOP		TUCK-IN V-NECK TOP	
3 POCKETS			4 POCKETS		2 POCKETS		3 POCKETS		4 POCKETS		3 POCKETS		1 POCKET	
Zip-off sleeves to convert into a vest 1 Hidden zipper pocket Elastic hem			Zipper closure Snap off hood Rib-knit back yoke, side panels and hem		Rib-knit collar and sleeve cuffs Locker loop Logo elastic hem		Back yoke 1 Accessory pocket Side vents		Curved front seams 2 Side seam pockets Side vents		Round neck ID badge loop 1 Utility pocket Rounded hem		ID badge loop Split sleeve detail Side vents	
SIZE: XS-2XL   21.5"			SIZE: XS-2XL   25"		SIZE: XS-2XL   23"		SIZE: XXS-5XL   27"		SIZE: XS-3XL   27"		SIZE: XS-3XL   25.5"		SIZE: XS-5XL   27"	
											SIZE: XS-3XL   24"		SIZE: R: XS-3XL   28.5" P: XS-XL   26.5" T: XS-XL   31"	
													SIZE: R: XXS-5XL   30.5" P: XS-2XL   28.5" T: XS-XL   33"	



LAYERS

FABRIC:  
Each piece is a  
unique blend of fabrics.

COLLECTION FEATURES:  
Moisture Wicking

WOMEN'S

NEW



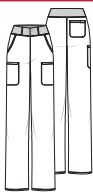
MC010

MID-RISE FLARE  
LEG PANT

4 POCKETS

Flat front, elastic  
back waistband  
Internal  
drawstring  
Leg opening, 18"

SIZE:  
R: XXS-3XL | 31"  
P: XS-2XL | 28.5"  
T: XS-XL | 34"



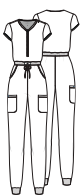
MC011

ROUGHED WIDE  
LEG PANT

5 POCKETS

Knit waistband  
with elastic  
ruching details  
Internal elastic  
drawstring  
Leg opening, 22"

SIZE:  
R: XS-3XL | 31"  
P: XS-XL | 28.5"



MC510

ZIP FRONT  
V-NECK  
JUMPSUIT

4 POCKETS

ID badge loop  
Elastic  
waistband  
Adjustable  
drawstring  
Knit cuffs

SIZE:  
XS-2XL | 28.5"



MC2660

WARM-UP  
JACKET

3 POCKETS

Full, zip  
front closure  
Jersey knit  
cuffs  
Instrument  
pocket

SIZE:  
XS-5XL | 26"



MC706

KNIT LETTUCE  
EDGED TOP

1 POCKET

Rib-knit  
round neckline  
Raglan sleeves  
Curved hem  
92% Polyester,  
8% Spandex

SIZE:  
XS-2XL | 23.5"



MC8499

PERFORMANCE  
KNIT TEE

NO POCKETS

Crew neckline  
Long sleeve  
Side seam  
panels  
90% Polyester,  
10% Spandex

SIZE:  
XS-3XL | 26"



MC700

RUCHED  
UNDERSCRUB

NO POCKETS

Round neckline  
Elastic ruching  
at side seams  
90% Polyester,  
10% Spandex

SIZE:  
XS-2XL | 24"



MC8684

PERFORMANCE  
FLEECE JACKET

4 POCKETS

Full, zip front  
closure  
2 Internal  
pockets  
100% Polyester

SIZE:  
XS-3XL | 26.25"



MC708

MOCK-NECK  
UNDERSCRUB

NO POCKETS

Long sleeve  
Lettuce-edge  
curved hem  
92% Cotton  
8% Spandex

SIZE:  
XS-2XL | 25"



MC320

JERSEY  
SWEATER KNIT  
CARDIGAN

NO POCKETS

3 button  
closure  
50% Viscose,  
30% Polyester,  
20% Nylon  
sweater knit

SIZE:  
XS-XL | 22"



N/A

N/A

N/A

N/A

N/A

N/A

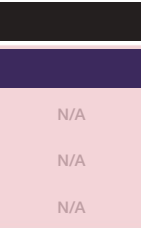
N/A



N/A

N/A

N/A



N/A

N/A

N/A

N/A

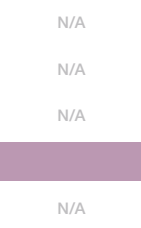
N/A

N/A

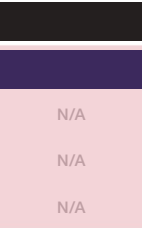
N/A

N/A

N/A



N/A



N/A

N/A

N/A

N/A

N/A

N/A

N/A

N/A

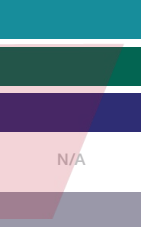
N/A



N/A



N/A



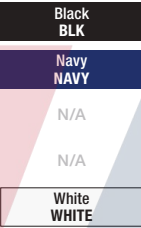
N/A



N/A



XS-3XL



Amp Pink  
AMPP

N/A

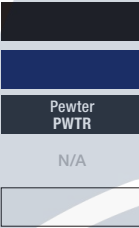
FASHION COLORS

N/A

N/A

FASHION SIZING

N/A



N/A

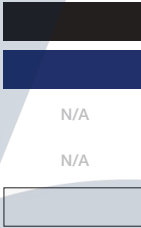
N/A

N/A

N/A

N/A

N/A



N/A



N/A

N/A

XS-2XL



N/A

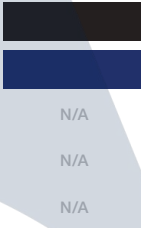
N/A

N/A

N/A

N/A

N/A



N/A

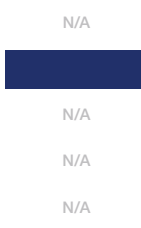
N/A

N/A

N/A

N/A

N/A



N/A

N/A

N/A

N/A

N/A

N/A

N/A

N/A

N/A

N/A



Heather Orchid  
HEOD



TOUCH

FABRIC:  
76% Polyester | 21% Rayon | 3% Spandex  
MISSY FIT

COLLECTION FEATURES:  
Cool & Comfortable | Soft as Cotton

WOMEN'S

BEST SELLER



MC7459  
V-NECK  
SHIRTTAIL  
TOP

4 POCKETS

Rib-knit side  
panels  
1 Zipper  
accessory  
pocket

SIZE:  
XS-5XL | 27"



MC607  
SPLIT ROUND  
NECK TOP

2 POCKETS

Rib-knit side  
panels  
ID badge loop  
Utility tab

SIZE:  
XS-3XL | 25.5"



MC7468  
KNIT BACK  
V-NECK TOP

4 POCKETS

Breathable knit  
back panel  
1 Zipper  
accessory  
pocket

SIZE:  
XS-5XL | 27"

BEST SELLER



MC7448  
KNIT TUCK IN  
V-NECK TOP

1 POCKET

Rib-knit  
shoulder yokes  
ID badge loop  
Side vents

SIZE:  
XS-3XL | 27.5"



MC7425  
RAGLAN  
SLEEVE TOP

6 POCKETS

Rib-knit raglan  
sleeves and  
waist panels  
Side vents

SIZE:  
XS-3XL | 27"

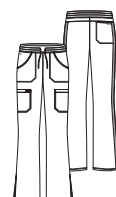
BEST SELLER



MC7710  
YOGA  
JOGGER

5 POCKETS  
Mid-rise rib-knit  
waistband and  
cuffs  
Adjustable  
drawstring  
Leg opening, 8.75"

SIZE:  
R: XS-3XL | 28.5"  
P: XS-XL | 26.5"  
T: XS-XL | 31"



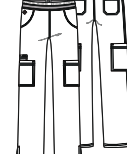
MC007  
FASHION  
FLARE LEG  
PANT

5 POCKETS

Elastic  
waistband  
Rib-knit side  
panels  
Leg opening,  
16"

SIZE:  
R: XS-3XL | 31"  
T: XS-XL | 34"

BEST SELLER



MC7739  
YOGA  
STRAIGHT LEG  
CARGO PANT

7 POCKETS

Mid-rise rib-  
knit waistband  
Internal  
drawstring  
Leg opening,  
16"

SIZE:  
R: XS-5XL | 31"  
P: XS-2XL | 29"  
T: XS-XL | 33.5"



MC7725  
JERSEY  
WAIST YOGA  
PANT

6 POCKETS

Mid-rise rib-  
knit waistband  
Adjustable  
drawstring  
Leg opening,  
15"

SIZE:  
R: XS-3XL | 30.5"  
P: XS-XL | 28.5"  
T: XS-XL | 33"



MC7705  
DOUBLE  
CARGO  
JOGGER

6 POCKETS

Mid-rise rib-  
knit waistband  
Adjustable  
drawstring  
Leg opening,  
8.75"

SIZE:  
R: XS-3XL | 28.5"  
P: XS-XL | 26.5"  
T: XS-XL | 31"

Black BLK									
Navy NAVY	N/A					N/A			
Pewter PWTR									
Royal ROYL	N/A					N/A			
Wine WINE	N/A	N/A				N/A			
Ciel CIEL	N/A	N/A				N/A			
Caribbean CARI	N/A	N/A		N/A		N/A	No Tall	N/A	N/A
Teal TEAL	N/A	N/A				N/A			
Hunter Green HNTR	N/A	N/A	N/A	N/A		N/A		N/A	N/A
Galaxy GLXY	N/A	N/A	N/A	N/A		N/A		N/A	N/A
White WHIT XS-3XL	N/A	N/A	N/A	N/A	N/A	N/A		N/A	N/A
Eggplant EGPL	N/A	N/A		N/A		N/A		N/A	N/A
CLOUD CLOD	N/A	N/A	N/A	N/A		N/A		N/A	N/A
Slate SLAT	N/A	N/A				N/A			
Olive OLIV	N/A	N/A				N/A			
Red REDD	N/A	N/A		N/A		N/A	No Tall	N/A	N/A
Coral CRAL	N/A	N/A	N/A	N/A		N/A		N/A	N/A
Ice Pink IPNK	N/A	N/A		N/A		N/A	No Tall	N/A	N/A
Lilac LILA	N/A	N/A				N/A			
Pink Punch PKPH	N/A	N/A	N/A	N/A		N/A		N/A	N/A
Periwinkle PWNK	N/A	N/A	N/A	N/A		N/A		N/A	N/A

FASHION COLORS

F Kiwi Lime KWLM	N/A	N/A	F Kiwi Lime KWLM	N/A	F Kiwi Lime KWLM	N/A	F Kiwi Lime KWLM	N/A	N/A
F Mali-Blue Shore MBSR	N/A	N/A	F Mali-Blue Shore MBSR	N/A	F Mali-Blue Shore MBSR	N/A	F Mali-Blue Shore MBSR	N/A	N/A

FASHION SIZING

XS-3XL	N/A	N/A	XS-3XL	N/A	R: XS-3XL	N/A	R: XS-3XL	N/A	N/A
--------	-----	-----	--------	-----	-----------	-----	-----------	-----	-----



**FABRIC:**  
76% Polyester | 21% Rayon | 3% Spandex

**COLLECTION FEATURES:**  
Cool & Comfortable | Soft as Cotton

## INSIGHT FOR ME

**MEN'S**



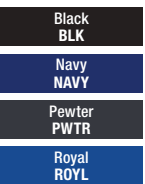
**MC2478**

**TUCK-IN  
V-NECK TOP**

**1 POCKET**

Relaxed design  
1 Chest pocket  
Side vents

**SIZE:**  
XS-5XL | 30"



N/A N/A N/A N/A

N/A N/A N/A N/A

Caribbean  
CARI

N/A

T  
EN

FABRIC:  
100% Polyester

COLLECTION FEATURES:  
Breathable | Super Soft  
Moisture Wicking

# SIZE CHARTS

## MEN'S

BEST SELLER



MC2486

V-NECK TOP

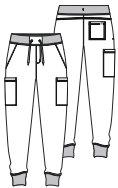
3 POCKETS

Front shoulder  
yoke seams  
Side vents

SIZE:

XS-5XL | 30"

BEST SELLER



MC2765

ZIP-FLY  
CARGO  
JOGGER

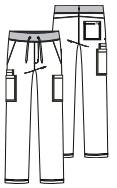
5 POCKETS

Mid-rise knit  
waistband  
Adjustable  
drawstring  
Leg opening,  
9.5"

SIZE:

R: XS-5XL | 29.5"  
S: XS-3XL | 27"  
T: XS-3XL | 31.5"

BEST SELLER



MC2772

ZIP-FLY  
STRAIGHT  
LEG PANT

6 POCKETS

Mid-rise knit  
waistband  
Adjustable  
drawstring  
Leg opening,  
15"

SIZE:

R: XS-5XL | 31"  
S: XS-3XL | 28.5"  
T: XS-3XL | 33"



MC360

KNIT  
ZIP-FRONT  
JACKET

3 POCKETS

Knit stand-up  
collar  
Back yoke  
Knit cuffs

SIZE:

XS-3XL | 28.5"

## WOMEN'S

SIZE (us)	BUST	WAIST	HIPS
XXS (0)	32"	24"	34"
XS (2-4)	33-34"	25-26"	35-36"
S (6-8)	35-36"	27-28"	37-38"
M (10-12)	37-39"	29-31"	39-41"
L (14-16)	40-43"	32-35"	42-45"
XL (18-20)	44-47"	36-39"	46-49"
2XL (22-24)	48-51"	40-43"	50-53"
3XL (26-28)	52-55"	44-47"	54-57"
4XL (30-32)	56-59"	48-52"	58-62"
5XL (34-36)	60-63"	52-55"	63-67"

### HEIGHT

P: 5'4" and under  
R: 5'4.5"- 5'7"  
T: 5'9"- 5'11"

### LENGTH

P: 28" - 29"  
R: 30"- 31"  
T: 32.5 - 33.5"

## MEN'S

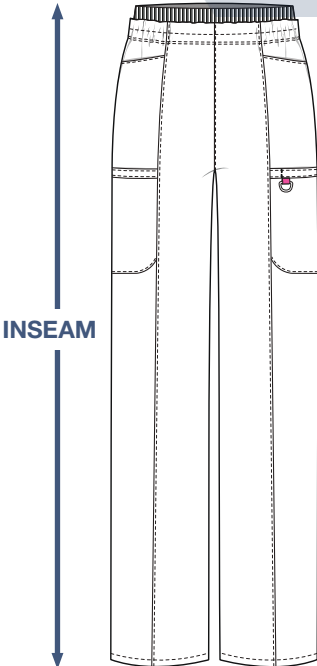
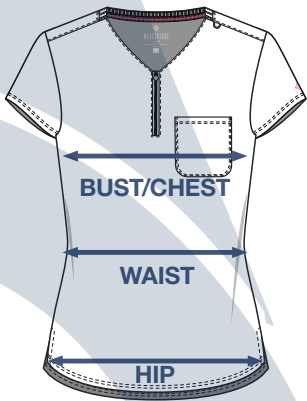
SIZE (us)	CHEST	WAIST	HIPS
XS	32-34"	27-28"	32-34"
S	35-37"	28-30"	35-37"
M	38-40"	32-34"	38-40"
L	42-44"	35-37"	42-44"
XL	46-48"	39-41"	46-48"
2XL	50-52"	43-45"	50-52"
3XL	54-56"	47-49"	54-56"
4XL	58-60"	51-53"	58-60"
5XL	62-64"	55-57"	62-64"

### LENGTH

S: 28.5"  
R: 31"  
T: 33"

## MATERNITY

SIZE (us)	BUST	WAIST	HIPS
XS	34-35"	Elastic Waist	36-37"
S	36-37"		38-39"
M	38-40"		40-42"
L	41-44"		43-46"
XL	45-48"		47-50"
2XL	49-52"		51-54"
3XL	53-55"		55-58"



INSEAM





## **American Scrubs**

Salvador Quevedo y Zubieta 236-  
Local A, La Perla, 44360  
Guadalajara, Jal.

---

## **Atención a clientes**

+52 33 3721 9619  
[americanscrubs.shop@gmail.com](mailto:americanscrubs.shop@gmail.com)

---